

DESCRIPTION OF THE QUALITY

Composition pile: 75 % polyester, 20 % wool and 5 % cotton.

Exceptions Galaxy synthetic: 75 % polyester, 20 % acryl and 5 % cotton.

Pile structure: Loop pile, combination of wool and pile threads.

Total thickness (approx.): 41 mm.

Pile height above ground fabric (approx.): 40 mm.

Structure back: Latex back.

Material back: Waterproof latex.

Production method: Hand tufted.

Child labour: The production of Casalis-carpets is carried out without the use of child labour.

Finish: Folded borders of glued primary backing. Covered underneath with Casalis-tape.

POSSIBILITIES COLLECTION

Designs: The Galaxy-collection does not contain standard designs, but designs are possible using different colour areas.

Sizes: All carpets are made to measure, there are no standard sizes available. Maximum width is 490 cm. Maximum length is 480 cm. For larger widths, two carpets can be connected to each other without this being visible on the pile side.

Possible shapes: Round, oval, polygonal etc.

Deviations to size and shape: Because Casalis carpets are made by hand, slight deviations in shape and size can occur. These imperfections are part and parcel of a carpet made by hand and consequently cannot be valid grounds for complaints.

Non standard colours:

- Based on our colour reference boxes.

- Based on a reference sample (e.g. piece of fabric).

- Samples only possible as colour sample.

Colour differences: Slight colour differences between yarn batches are characteristic of dying natural materials and consequently cannot be valid grounds for complaints.

RANGE OF USES

General: Intense use

Underneath dining table and chairs

With a sofa combination

In the bedroom

Public places (e.g. hotel lobby)

Wet rooms (bathrooms etc): Possible with the Galaxy synthetic version.

On stairs: Possible (light use).

Desk chairs on wheels: Not possible.

SPECIFIC USER INSTRUCTIONS

Receipt of new carpet: Upon receipt of the new carpet, immediately remove it from the plastic wrapping in order to avoid the formation of moisture and mould.

Underlay: If there are no heavy objects on the carpet, an underlay will prevent the carpet from moving.

Carpet protectors: We do recommend the use of carpet protectors, because these will divide the tension over several points.

Deviations in size: Casalis carpets are hand made.

Shape and size can differ slightly. Don't have your carpet lined up with any straight seams in the floor, but have the carpet cover them, so that any irregularities are not noticed.

Discolouring of the subfloor: The back of the carpet has no influence on the floor underneath.

Use as wall-to-wall carpet: Galaxy can also be used as a wall-to-wall carpet. In that case, the carpet will be made in the shape of the surface of the floor with a little extra on the sides allowing it to be cut to size once in situ. Next, the carpet is glued to the floor or stretched between the walls. Stretching has the advantage that the carpet can be taken out again in a simple way. Ask a professional interior decorator which method is best suited to the room in question.

Fluffing: The pile yarn is made up of a continuous yarn which does not fluff.

Ageing of the carpet: All objects are subject to ageing, as are carpets. Turning the carpet at regular intervals ensures even ageing.

SPECIFIC MAINTENANCE INSTRUCTIONS

Cleaning of the entire carpet: Casalis advises to have this carpet cleaned in an industrial washing machine which also cleans doormats etc, for businesses. To avoid staining, it is very important to have this carpet dried in a special drying room. Consult a specialist!

How will the carpet age?

Changes in aspect of textile floor covering by means of the Hexapod tumbler test - ISO 10361 (2000).

Test results:

Weight loss after 12000 revolutions in % 0,05

Aspect changes after 12000 revolutions 4

Colour changes after 12000 revolutions >=2

User class Intense

Conclusion: The loss of pile after 12000 revolutions is zero. The carpet is not fluffy at all. The carpet receives an exceptional high score 'intense'. As a result, it can be put in the most demanding places, domestic as well as professional.

Can sunlight fade the carpet?

Lightfastness test - ISO 105 B02 (1994/Amd 1998 and 2000).

Test results:

Lightfastness average colour 5

Lightfastness pastel colours 7

Conclusion: Galaxy is very lightfast. Nevertheless, it is better not to expose carpets to direct sunlight.

What if a spark of fire hits the carpet?

Flammability of textile floor covering- US Commercial Standard: "Surface Flammability of Carpets and Rugs, Doc. FF 1-70".

Test results: The maximum distance between the centre of the burning pill and the damaged area is 8.4 mm.

The flame spread with approx 4 mm.

Conclusion: The flame won't spread far and is no danger to other surrounding objects. At the place of burning, the pile yarn will have visibly melted away. Always be careful with fire and screen your carpet from the open fire.

How visible are the imprints of e.g. chair or table legs?

Static tension - ISO 3416 (1975).

Test results: After 24hrs Galaxy has an impression depth of 3.36 mm.

Conclusion: Taking into account the tangly pile of the Galaxy, imprints won't be visible. Moreover, the flexible polyester yarn ensures imprinted piles spring back up again.

Can the carpet be combined with underfloor heating?

Thermal conductivity with the Tecosy-device: 1 plate method.

Test results: Thermal conductivity with the Tecosy-device = 0.1778.

Conclusion: The Galaxy collection scores quite high in this test. The carpet has an insulating effect on the underfloor heating, especially when used as wall-to-wall carpet or rug with a surface larger than 60 % of the total surface of the floor. use of an additional means of heating may be necessary. Ask your architect or installer for advice, because several aspects can influence the efficiency of underfloor heating.

In spaces without underfloor heating the Galaxy-quality will offer extra insulation.

/GALAXY

COLOURS



Diamond-100% synthetic



Diamond



Snowwhite



Silver



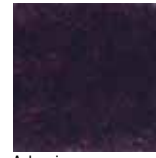
Basalt



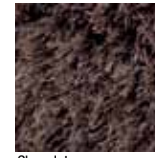
Charcoal



Purple



Aubergine



Chocolate



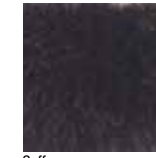
Pale gold



Moss green



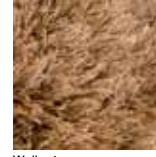
Taupe



Coffee



Champagne



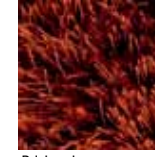
Walnut



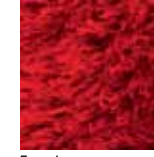
Copper



Orange



Brick red



Ferrari